

PMB INLINE MIXER 30 T/H (ONE PASS)

Build on a 40 feet frame

The ENH Engineering A/S PMB bitumen plant is designed to meet with the high demands for modern PMB technology. The in-line system of this plant offers the possibility to produce all known PMB types. The in-line system provides great flexibility in the production phase. The different flows for bitumen and SBS are controlled individually and can be changed during production without any influence on each other. A great advantage of the in-line system is that there is no need to premix bitumen 1 and 2 and SBS in the tanks, all is added continuously during the production which means that **the production only pass the mill once** and can continue practically as long as required without any stop.

Technical description

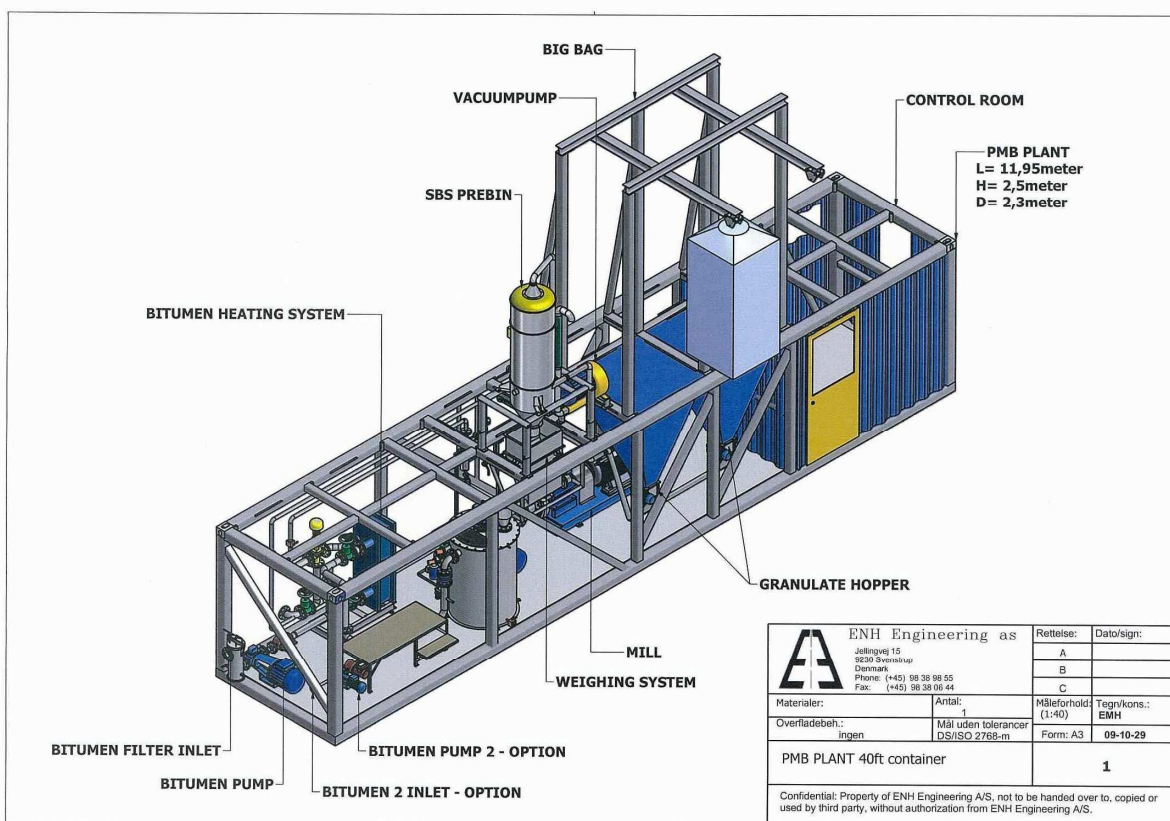
Mobile continues PMB mixing plant build on 40 feet container frame.

- Containing mixing unit and dosage equipment.
- Containing granulate feeding
- Main control room

Production output rate:	4 - 6 ton/h	16 % SBS
	6 - 10 ton/h	12 % SBS
	10 - 14 ton/h	8 % SBS
	14 - 25 ton/h	4 % SBS
	25 - 30 ton/h	3 % SBS

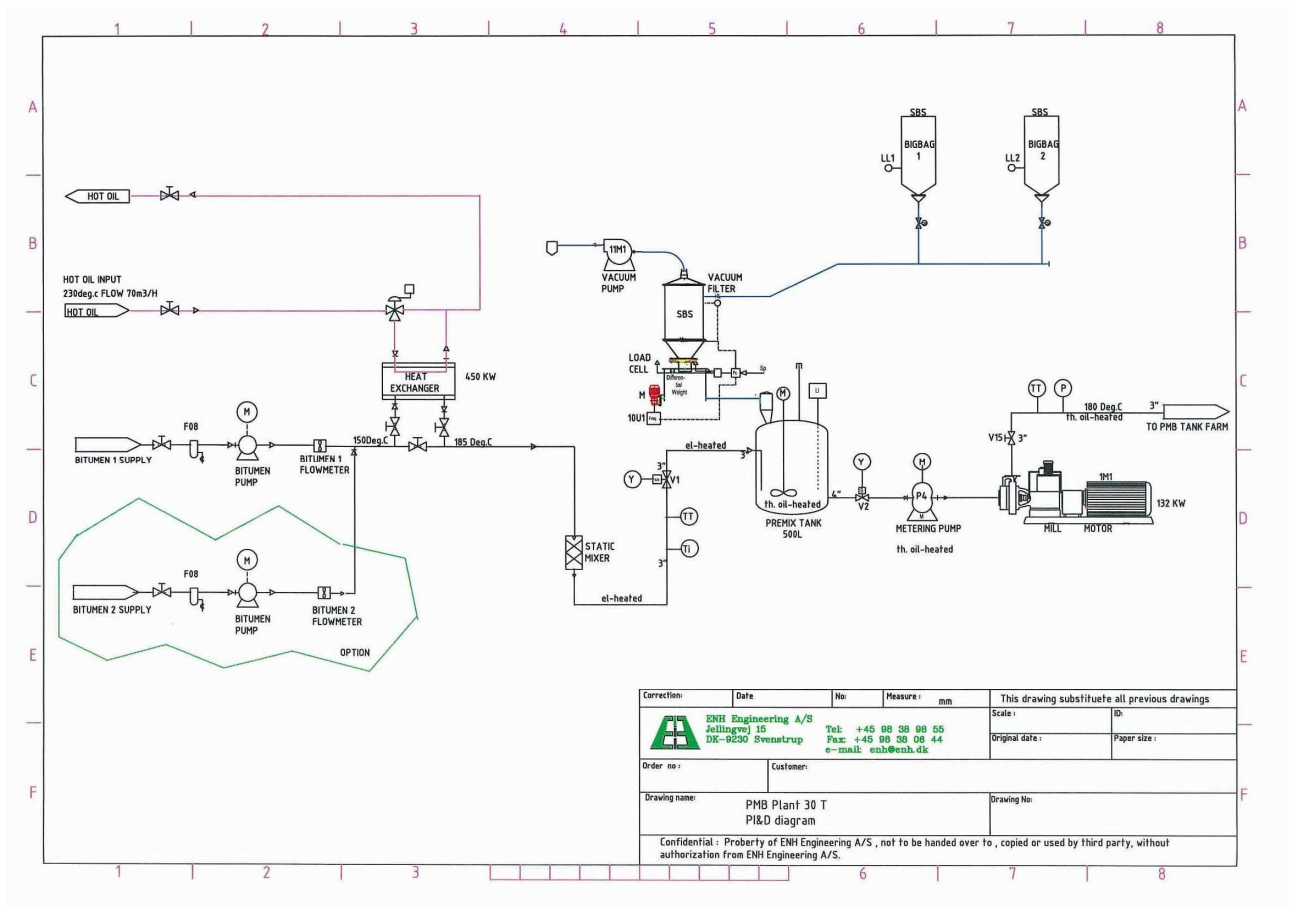
(Output rate can be various because of different qualities of bitumen and granulate products)

Voltage: 3 * 400/230 V
50 Hz
160 - 180 KVA



Mixing unit

- Bitumen feed pump 1
- Bitumen input flowmeter.
- Static mixer.
- Bitumen feed pump 2 - option
- Bitumen flowmeter 2 - option
- Bitumen safety valve.
- Feed mixer tank.
- Bitumen safety valve.
- Bitumen metering pump.
- Mill system
- Granulate dosage unit incl. loose in weight system
- Plate heat exchanger system
- Control room
- Control system incl. computer



For further information please do not hesitate to contact us.

ENH Engineering A/S
 Jellingvej 15
 DK-9230 Svenstrup
 Denmark

Tel: +45-98389855
 Fax: +45-98380644
 E-mail: enh@enh.dk